

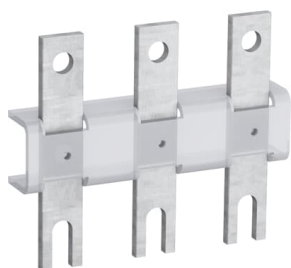


---

**PRODUCT-DETAILS**

# LX140

## LX140 Terminal Extension



---

**General Information**

Extended Product Type	LX140
Product ID	1SFN074210R1000
EAN	7320500481288
Catalog Description	LX140 Terminal Extension
Long Description	Terminal extension pieces, 3-pole AF116-AF146

---

**Ordering**

Minimum Order Quantity	1 piece
Customs Tariff Number	85364900

---

**Popular Downloads**

Data Sheet, Technical Information	1SBC100214C0202
Instructions and Manuals	N/A
CAD Dimensional	2CDC001079B0201

Drawing

---

## Dimensions

Product Net Width	84 mm
Product Net Depth / Length	14.5 mm
Product Net Height	70 mm
Product Net Weight	0.07 kg

---

## Technical

Terminal Type	Screw Terminals
Suitable For	AF116 AF140 AF146 AF116B AF140B AF146B

---

## Material Compliance

Conflict Minerals Reporting Template (CMRT)	9AKK108467A5658
REACH Declaration	2CMT2021-006202
RoHS Information	2CMT2021-006277
RoHS Status	Following EU Directive 2011/65/EU
WEEE B2C / B2B	Business To Business
WEEE Category	5. Small Equipment (No External Dimension More Than 50 cm)

---

## Certificates and Declarations

cUL Certificate	20120925-E36588
Declaration of Conformity - CE	2CMT004895
Declaration of Conformity - UKCA	2CMT2020-006120

---

## Container Information

Package Level 1 Units	bag 1 piece
Package Level 1 Width	84 mm
Package Level 1 Depth / Length	70 mm
Package Level 1 Height	14.5 mm
Package Level 1 Gross Weight	0.09 kg
Package Level 1 EAN	7320500481288

---

## Classifications

Object Classification Code	X
----------------------------	---

ETIM 7	EC002498 - Accessories for low-voltage switch technology
ETIM 8	EC002498 - Accessories/spare parts for low-voltage switch technology
ETIM 9	EC002498 - Accessories/spare parts for low-voltage switch technology
eClass	V11.1 : 27371390
UNSPSC	39122221
IDEA Granular Category Code (IGCC)	5219 >> Switch part or accessory
E-Number (Finland)	3706534
E-Number (Norway)	4117842
E-Number (Sweden)	3210197

---

## Categories

---

Low Voltage Products and Systems → Control Products → Contactors → Block Contactors

